



Improving  
Healthcare  
Together  
2020 to 2030



Your local NHS is consulting on proposals to invest in both Epsom and St Helier hospitals and build a new specialist emergency care hospital at Epsom, St Helier or Sutton hospital.

# Join us at one of our events and have your say.

This public consultation takes place from  
8 January to 1 April 2020.

---

The consultation is led by NHS Surrey Downs, NHS Sutton and NHS Merton Clinical Commissioning Groups (CCGs). They are responsible for planning local healthcare services.

# Why do Epsom and St Helier hospitals need to change?

Epsom and St Helier hospitals are facing a number of significant challenges. We need to take action if we are to keep hospital services within the Surrey Downs, Sutton and Merton area for generations to come.

There are three main reasons why hospital services need to change.



## 1. Quality

Epsom and St Helier hospitals do not have enough specialist doctors, nurses and clinical staff for some of the most important emergency services. Nationally, there is a shortage of these specialist staff.



## 2. Buildings

Many of the hospital buildings are older than the NHS, and over half of the hospital space is not suitable for treating patients to modern healthcare standards.



## 3. Finances

A huge amount of money is spent on temporary staff and maintaining buildings to keep our hospital services safe.

**If we do not change how hospital services are provided in our area then quality and safety will get worse. We need to improve quality, invest in new buildings and run our hospitals with the money we are given.**

**We have now been allocated £500 million to make these changes.**

# Consultation events

Come along to any of our local listening events to find out more about our proposals and tell us what you think.

As well as the listening events listed below, there are other opportunities to have your say.

To find out more visit our website [www.improvinghealthcaretogether.org.uk](http://www.improvinghealthcaretogether.org.uk)

## Surrey Downs



**Tuesday 28 January 2020**

**from 1.30pm to 3.30pm**

The King's Church Epsom,  
Longmead Road,  
Epsom KT19 9BU

**Tuesday 11 February 2020**

**from 6.30pm to 8.30pm**

Epsom Downs Racecourse,  
Epsom Downs,  
Epsom, KT18 5LQ

**Tuesday 17 March 2020**

**from 6.30pm to 8.30pm**

Bookham Community Association,  
51 Church Road, Great Bookham,  
Leatherhead, KT23 3PQ

## Merton



**Friday 24 January 2020**

**from 1.30pm to 3.30pm**

Chaucer Centre,  
Canterbury Road,  
Morden, SM4 6PX

**Wednesday 12 February 2020**

**from 6.30pm to 8.30pm**

New Horizon Centre,  
S Lodge Avenue,  
Mitcham, CR4 1LT

**Thursday 5 March 2020**

**from 6.30pm to 8.30pm**

Chak 89,  
105 Bond Road,  
Mitcham, CR4 3HG

## Sutton



**Tuesday 21 January 2020**

**from 6.30pm to 8.30pm**

Holiday Inn,  
Gibson Road,  
Sutton, SM1 2RF

**Wednesday 12 February 2020**

**from 1.00pm to 3.00pm**

The Phoenix Centre,  
Mollison Drive,  
Wallington, SM6 9NZ

**Monday 2 March 2020**

**from 6.30pm to 8.30pm**

St Helier Community Association,  
Hill House, Bishopsford Road,  
Carshalton, Morden, SM4 6BL

# We want to improve the current buildings at Epsom and St Helier hospitals as well as build a new specialist emergency care hospital at Epsom, St Helier or Sutton.

## District hospitals at both Epsom and St Helier

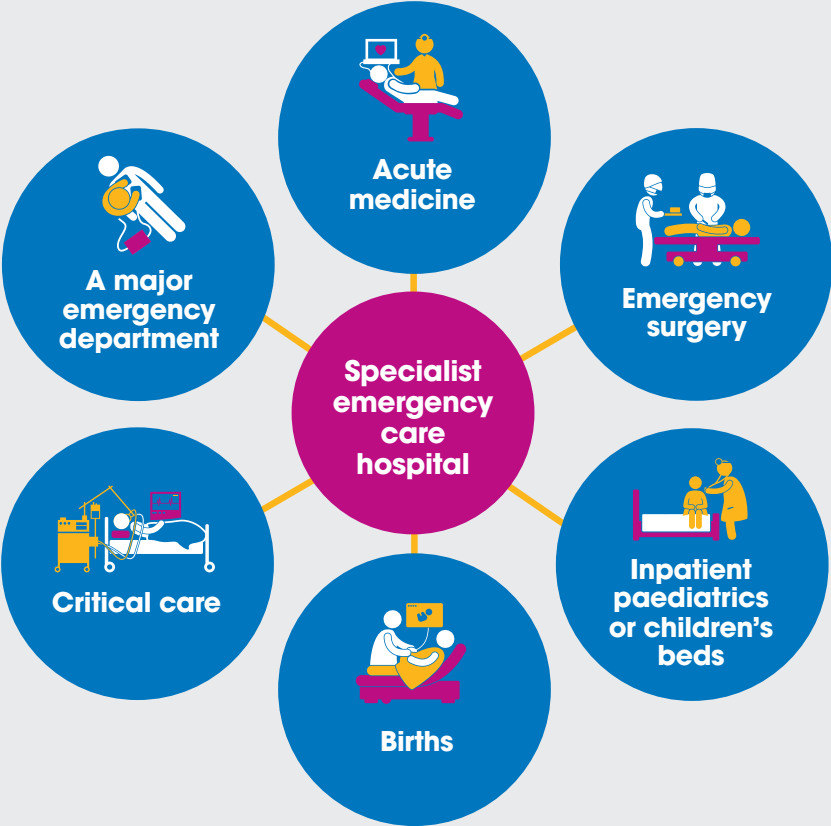
The majority of services would stay at both Epsom and St Helier hospitals in refurbished buildings. Both would provide 'district hospital' services 24 hours a day, 365 days a year, and have urgent treatment centres at each.



- Epsom and St Helier hospitals see around 2,500 patients a day
- 2,200 patients would be treated in Epsom and St Helier district hospitals
- 300 patients would be treated in the specialist emergency care hospital

## Specialist emergency care hospital built at Epsom, St Helier or Sutton

We would bring together six core (major) services for the most unwell patients, those who need more specialist care, and births in hospital, onto one site in new state-of-the-art buildings.



**Travel to the specialist emergency care hospital**

In all our options the time it would take the majority of people to get to the specialist emergency care hospital, by car or blue light ambulance, would not change. Over 99% of people travelling by car or blue light ambulance would get there within 30 minutes.

# Comparing the options for the site of a new specialist emergency care hospital



	Criteria	Sutton	St Helier	Epsom
	Quality of care	All options deliver improved quality of care		
	Long-term clinical sustainability	Three urgent treatment centres Located with Royal Marsden, it would also improve care for Epsom and St Helier cancer patients	Two urgent treatment centres	Two urgent treatment centres
	Meeting the health needs of local people	Least overall effect on travel for older people and people from deprived communities	Greatest effect on travel for older people and least effect on travel for people from deprived communities	Least effect on travel for older people and greatest effect on travel for people from deprived communities
	Fit with the NHS Long Term Plan	All options would be similar to the NHS Long Term Plan		
	Impact on travel and access	Smallest increase in average travel time	Second greatest increase in average travel time	Greatest increase in average travel times
	How easy it is to deliver?	Easiest to build	More complicated to build	More complicated to build
	Finance	Best value for the taxpayer	Medium value for the taxpayer	Least value for the taxpayer

---

# We want to know what you think

There are many different ways to have your say.

## You can

**Fill in the questionnaire** on our website  
[www.improvinghealthcaretogether.org.uk](http://www.improvinghealthcaretogether.org.uk)

**Come** to any of our local listening events to tell us your views

**Email us** at [hello@improvinghealthcaretogether.org.uk](mailto:hello@improvinghealthcaretogether.org.uk)

**Engage with us** on Twitter @IHTogether or visit our Facebook page @ImprovingHealthcareTogether

**Write to us** at Opinion Research Services, FREEPOST SS1018, PO Box 530, Swansea, SA1 1ZL

**Call us** on 02038 800 271 (Monday to Friday, 9.00am to 5.00pm)

**Message us via SMS** on 07500 063191

More information is available in our summary and full consultation documents on our website  
[www.improvinghealthcaretogether.org.uk](http://www.improvinghealthcaretogether.org.uk)

We will only make a final decision once we have completed this consultation and considered all the feedback we received and all the available evidence.

Whatever happens, none of the six services would be brought together until the new specialist emergency care hospital is built, which could take until 2025.

We look forward to hearing your views by 1 April 2020 and meeting you at one of our events.

If you would like this document in another format or language please call us on 02038 800 271 or email [hello@improvinghealthcaretogether.org.uk](mailto:hello@improvinghealthcaretogether.org.uk)

We will do our best to provide the information in a suitable format or language.